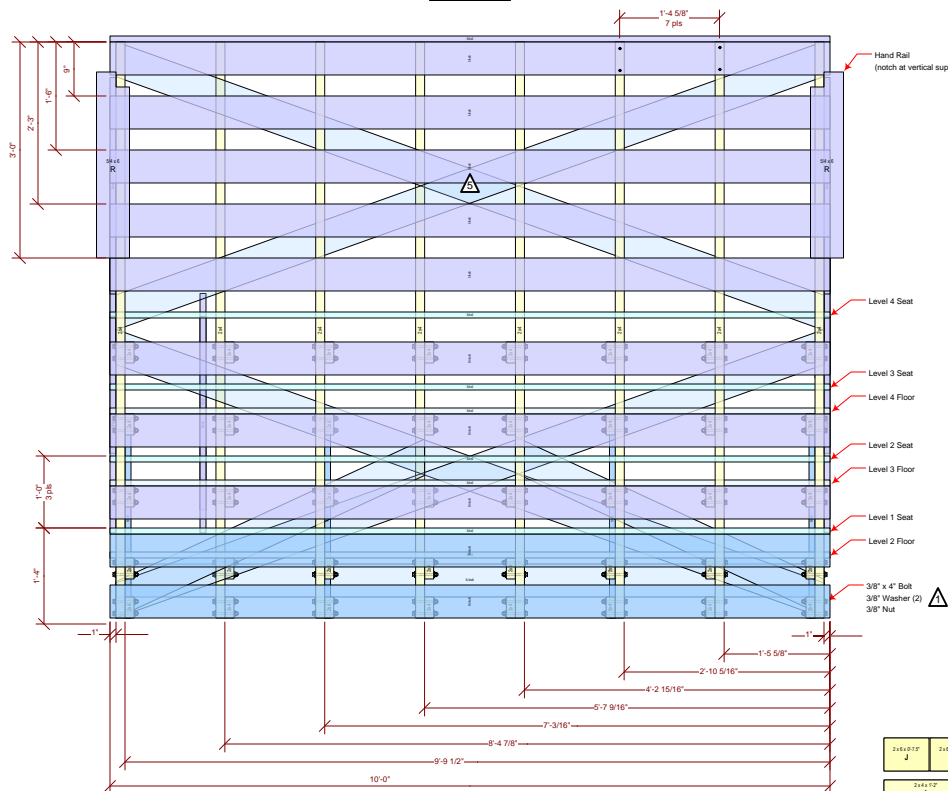


# Bleachers, 4-Level, Wooden, Portable, 10' Length

Designed by Kirt Blattenberger 1/10/2017 Rev 4 ©2017

Front View



## Key & Notes

□ Bracing □ Safety Railing □ Structure

⚠ All nuts, bolts, and washers are galvanized.

⚠ All screws are decking type for PT wood. #8 x 2" for face grain, #8 x 3" for end grain. Nuts, bolts, and washers are 3/8". You will need to estimate quantities and buy a few extra (return excess when complete).

⚠ For left and right end panels, substitute K for B, L for C.

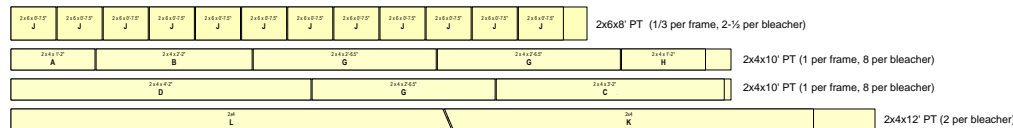
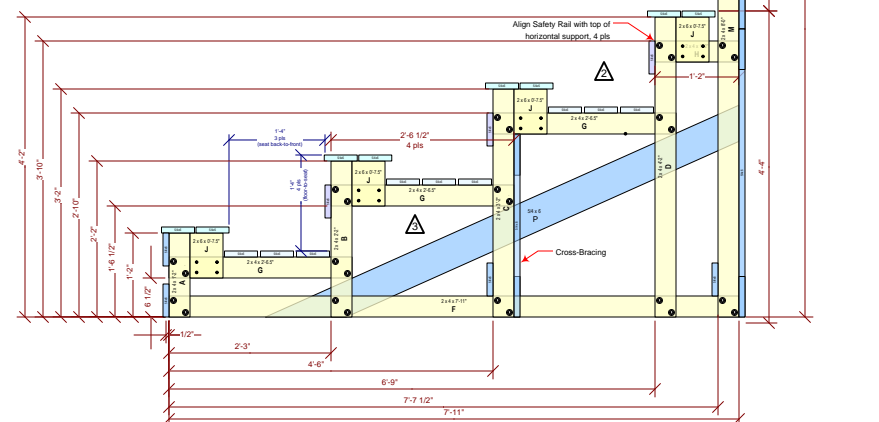
⚠ Drill clearance hole for bolts where necessary.

⚠ Cut 1/2-way through each board at overlap.

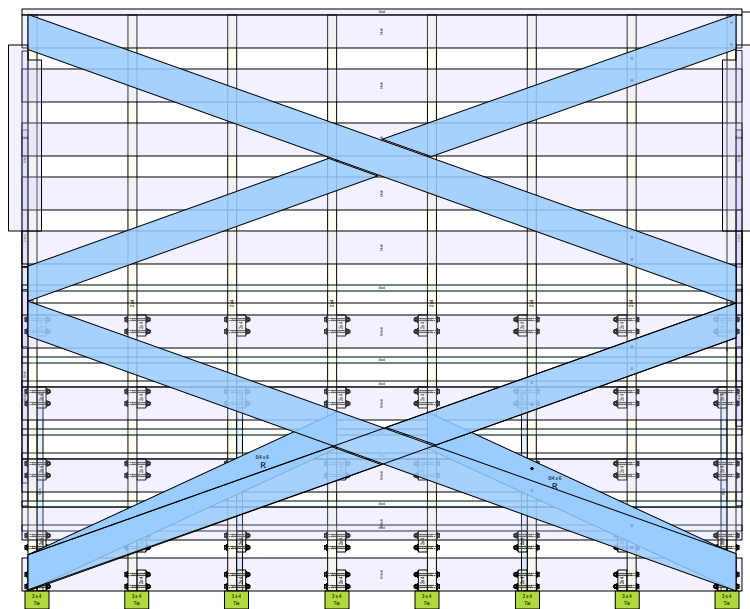
## Right End View

Main Structure, qty. 8

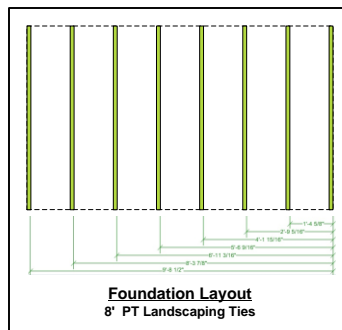
(assemble bolts from left on 4, right on 4)



Frame component templates



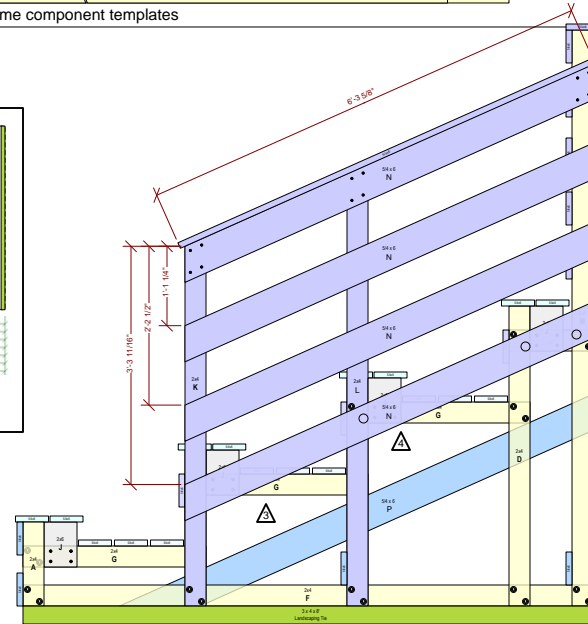
Rear View  
Safety Railing & Bracing



Foundation Layout  
8' PT Landscaping Ties

## IMPORTANT!

These plans are being made available free of charge. No guarantee of any kind is made regarding the safety or suitability of any part of the bleachers. Build and use the bleachers at your own risk. Two of these units were built by my son-in-law, daughter, and me and are in service at an equestrian riding center on a daily basis. Ours were made according to the plans and are very sturdy.



Right End View  
Safety Railing & Bracing  
(left end identical)